

## U-ARF 3 + 3

Automatic self-centering  
**BIG THRU-BORE CHUCK** with  
3 self-centering retractable jaws  
+ 3 floating jaws  
with stiffening  
and hydraulic or pneumatic  
built-in cylinders

- **Sizes from  $\varnothing$  650 mm up to  $\varnothing$  1000 mm**
- **Thru-bore from  $\varnothing$  200 mm up to  $\varnothing$  500 mm**
- **Steel body**
- **Stroke control system**
- **Hermetically sealed**

**ROTOMORS TECHNOLOGY**

*The original since 1966*

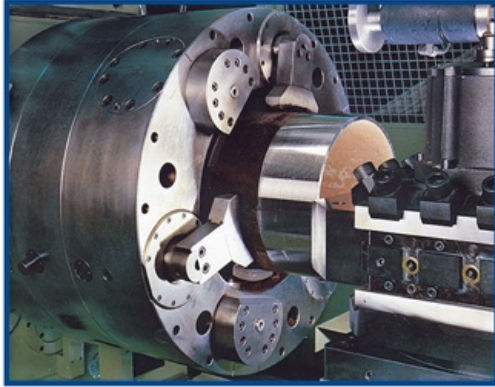




[www.rotomors.com](http://www.rotomors.com)

[info@rotomors.com](mailto:info@rotomors.com)

# U-ARF 3+3 AUTOMATIC SELF-CENTERING BIG THRU-BORE CHUCK with 3 self-centering retractable jaws+3 floating jaws with stiffening and hydraulic or pneumatic built-in cylinders



This type of special chucks with hydraulic or pneumatic built-in cylinder has been developed for the threading machining of oil pipes on horizontal lathes.

Both clamping operations, open and close, are fed by means of a special collector.

POWER.

THRU HYDRAULIC OR PNEUMATIC CYLINDER

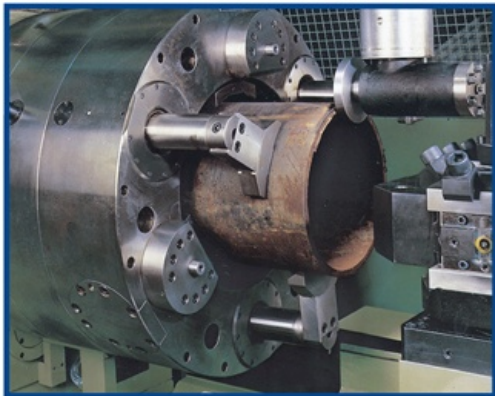
BUILT INTO CHUCK

OR, AS AN ALTERNATIVE

DIRECT POWER FROM SPINDLE NOSE

WITH SPECIAL HYDRAULIC COLLECTOR

A twin safety valve in the chuck maintains the air pressure during machining.

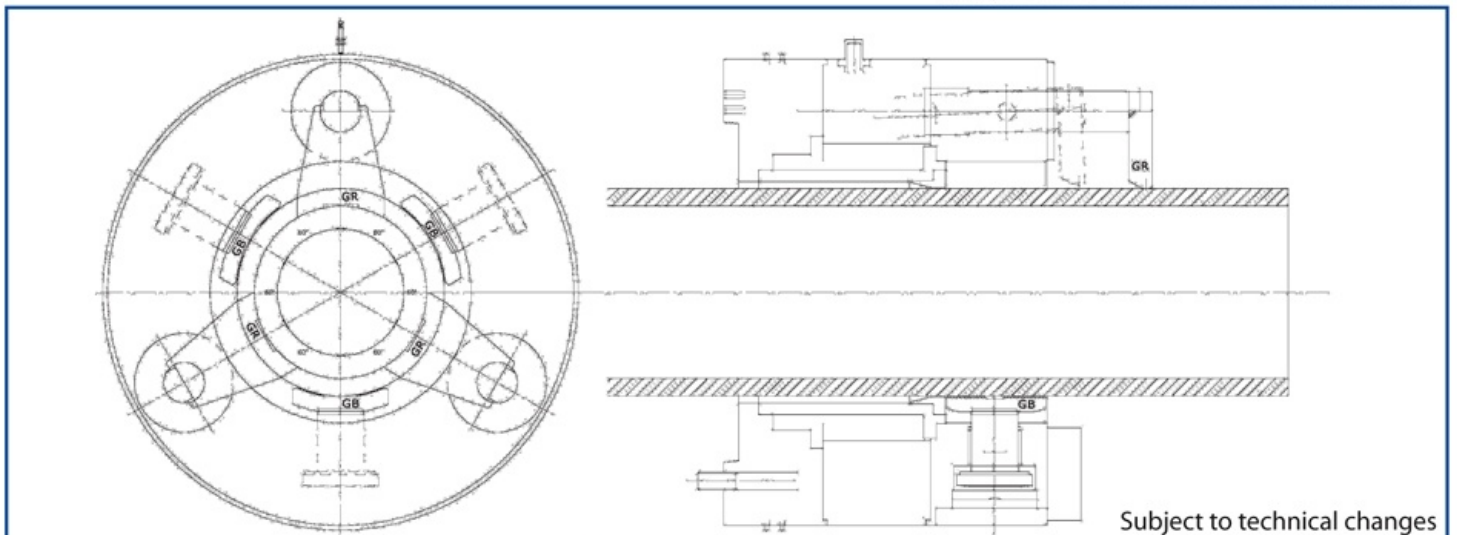
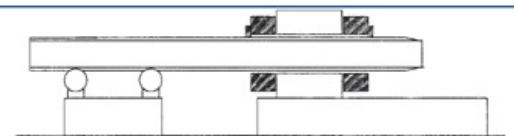


The machining cycle is as follows: the 3 external self-centering jaws are operated. This ensures the perfect centering of the end of the pipe in relationship to the centerline of the machine.

The pipe is clamped with the internal floating jaws and the moving jaws are then retracted. This allows the thread cutting operation on the pipe.

This fixture eliminates all machining rejects due to pipes with non-straight-ends.

## End machining of pipes on front-rear chuck, U-ARF 3+3



Subject to technical changes

**Different diameters can be manufactured upon customer's request**

### ROTOMORS S.p.A.

Via San Paolo, 62 - 10095 Grugliasco - Torino (Italy)

+39 011 78 57 57

[info@rotomors.com](mailto:info@rotomors.com)

### ROTOMORS FRANCE Sarl

7, Zone Artisanale Beptenoud Nord  
38460 Villemoirieu

+33 4 74 18 25 22

[info@rotomors.fr](mailto:info@rotomors.fr)

### ROTOMORS GmbH

Albert-Einstein-Str. 2  
70806 Kornwestheim

+49 7154 816 04 60

[info@rotomors.de](mailto:info@rotomors.de)

